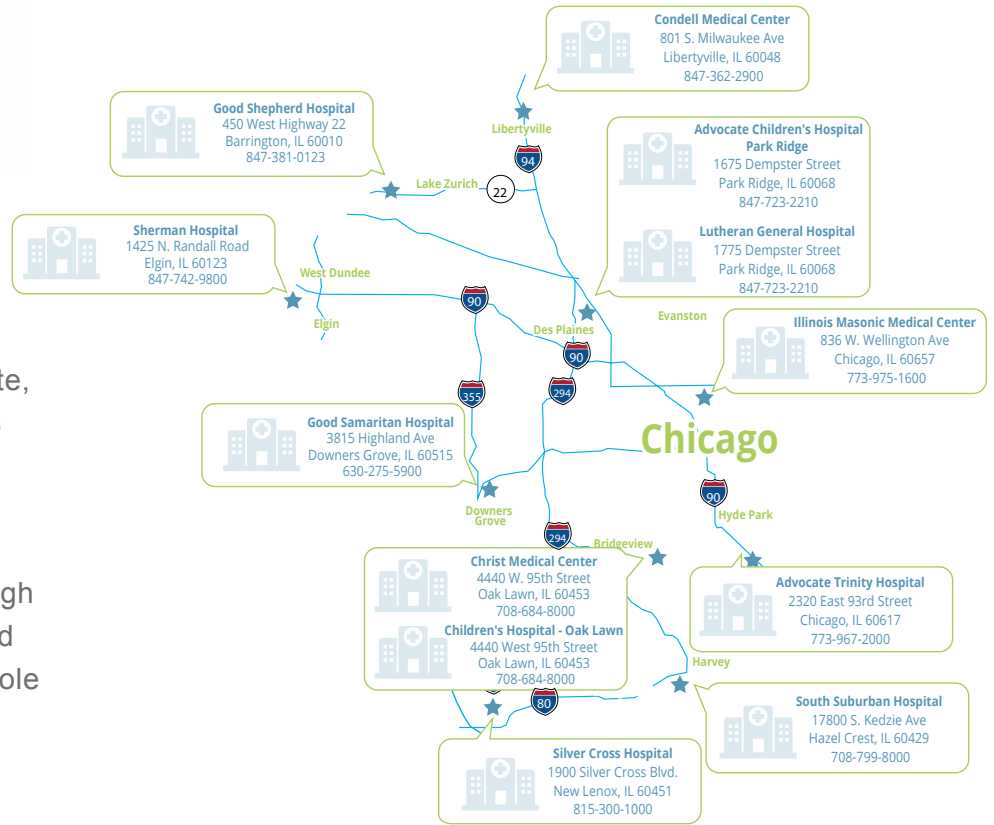




## What is Care Connect?

An integrated Health Plan with Advocate, one of the largest Healthcare providers in Illinois. The result, quality treatment outcomes for a cost effective price.

HST is revolutionizing healthcare through pricing transparency using Value-Based Payments (VBP). VBP plays a crucial role in delivering pricing transparency to a dysfunctional healthcare market.



## Member Benefits

- ★ No out of pocket expenses
- ★ Increased access to quality care
- ★ No balance billing
- ★ Continuity of care

## HST CARE CONNECT HOSPITALS MAP

<p><b>A community based Health Plan</b> that partners Advocate Health Care with businesses thru Direct-To-Employer (DTE) giving access to medical services cost effectively without a middle-man</p>	<p><b>Access to 12 hospitals,</b> over 6,000 physicians and 56 Walgreen's clinics</p>	<p><b>Average savings of 13% - 19%</b> Versus traditional PPO</p>	<p><b>No member Out-of-pocket (OOP)</b> when utilizing Advocate providers or facilities</p>	<p><b>With Care Connect open access still applies</b> but members will have OOP costs when using non-designated providers or facilities</p>	<p><b>Integrated Health Plan</b> with collaboration between physicians, hospitals and the community for sustainable healthcare</p>

(800) 292-0536

www.hstechnology.com